

STRATEGY AND STATE'S POLICY IN HANDLING COVID-19 : EXPERIENCE SHARING FROM THE PHILIPPINES

Sheilla M. Trajera, RN, MN, PhD

Director, Center for Linkages and international Affairs
Faculty, College of Nursing and Graduate Studies,
University of St. La Salle, Bacolod Philippines

Today's sharing will cover:

- A. The current issues related to the Philippines' general strategies and policies in handling the pandemic;
- B. The special key measures that are being taken in the Philippines in protecting the healthcare workers; and
- C. The efforts and challenges faced by healthcare workers in the Philippines including particular policies made by the government for protecting them

HIGHLIGHTS AND RECENT UPDATES ON COVID-19 as of June 3, 2020

Case Summary

As of June 3, 2020

19,748

Total Cases

*total includes validated cases only

18,997

Previous day

751

Additional Cases

221

Fresh Cases

530

Late Cases



4,153

Recoveries

91
added



974

Deaths

8
added

14,621

Active Cases

(net of recoveries and deaths)

Beat COVID-19 Today

A COVID-19 Philippine Situationer

Issue 38 | June 4, 2020



LOOK: DOH COVID-19 CASE BULLETIN #083

As of 4PM today, June 05, 2020, the Department of Health reports the total number of COVID-19 cases at 20,626.

HIGHLIGHTS AND RECENT UPDATES ON COVID-19 as of June 3, 2020 from the Department of Health

Department of Health (DOH) recorded 14,621 active cases as of June 3, with the majority of the patients exhibiting mild symptoms (13,712; 93.8%).

- A total of 2,703 (14% of all reported cases) are healthcare workers, with 1,465 recoveries and 32 deaths.

- Most of the confirmed cases are male (10,497; 55%)



Goal: Shortening Duration of Infectiousness (DOH)

Healthcare Workers affected by COVID-19

As of June 3, 2020

Note: There were inconsistencies on previously reported deaths by profession. Correct professions upon validation of HCWs who died are reflected in this report.

2,703

healthcare workers
Or 1/6 are HCWs (14%)

1,206

Active

1,465

Recoveries

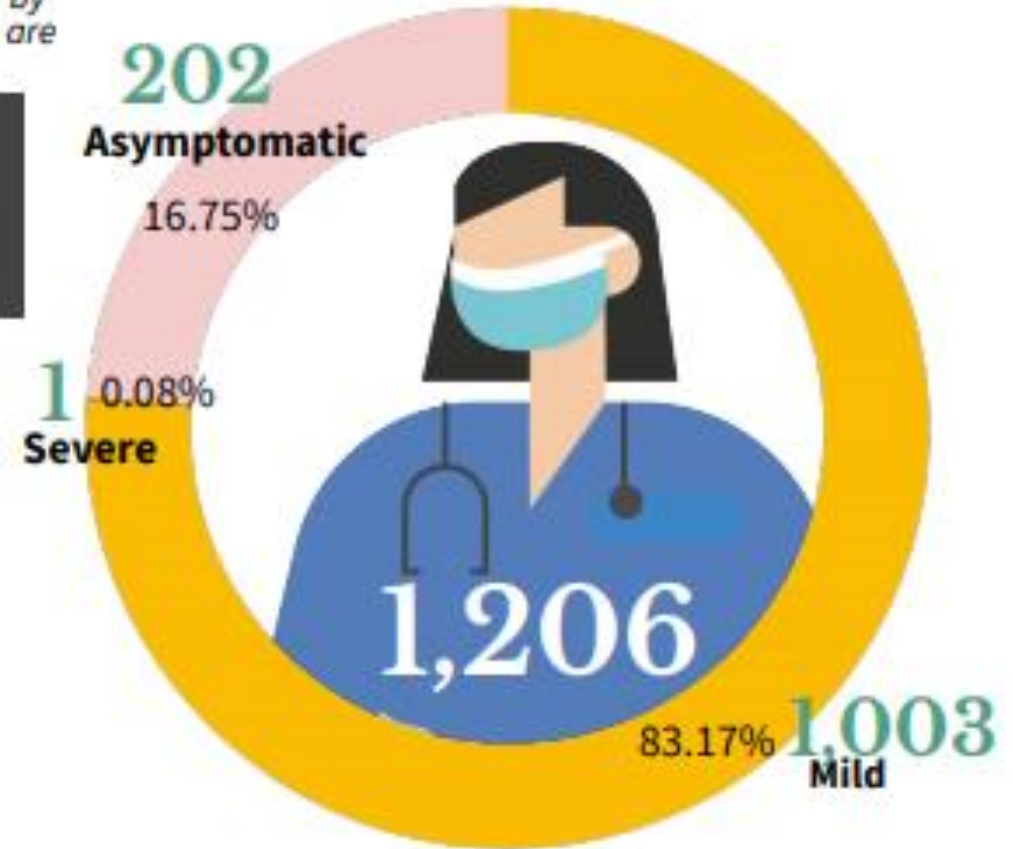
32

Deaths

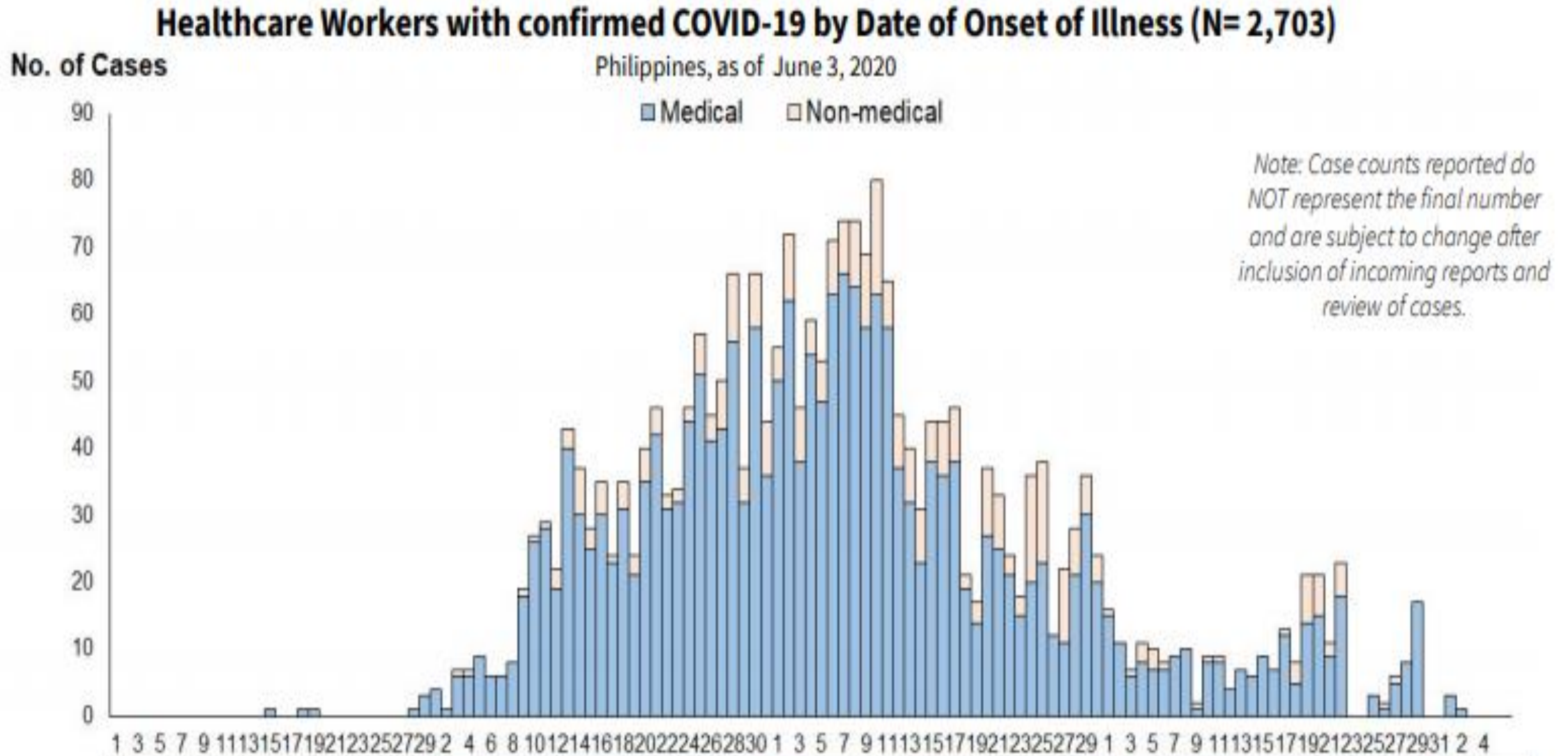
Top 5 Medical Profession/Cadre With COVID-19 cases

Profession/Cadre	Total Number	Deaths
Nurse	993	4
Physician	736	26
Nursing Assistant	176	0
Medical Technologist	109	0
Radiologic Technologist	56	0
Non-medical Staff	336	2

Active Cases Breakdown



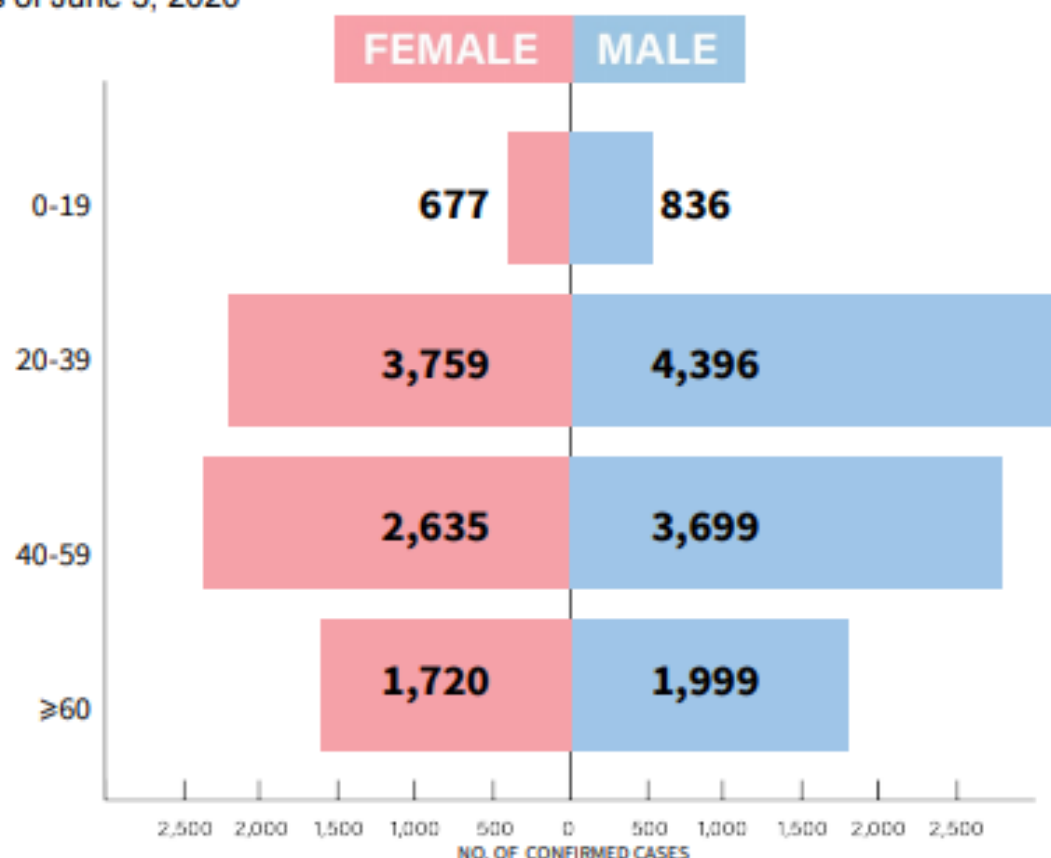
Goal: Shortening Duration of Infectiousness by the DOH with the flattening of the Curve



Goal: Shortening Duration of Infectiousness

Age and Sex Distribution of confirmed cases

As of June 3, 2020



Most of the confirmed cases are Male (10,947 or 55%). Most cases are within the 20-39 age group. Twenty-seven cases (10-female; 17-male) with unspecified age are included in the total.



Average hospital length of stay for recovered patients is at **17 days**.



A total of 485 (50%) deaths had known comorbidities: top 2 comorbidities are hypertension (291 or 60%) and diabetes (223 or 46%).

Common Problems Encountered By Nurses which were also addressed by the DOH

- 1. Need for complete PPE*
- 2. Lack of manpower, long working hours*
- 3. Transportation to and fro hospitals and stations near the residence of health care workers.*
- 4. Accommodation if possible to contain and confine the virus and to give more time for the healthcare workers to rest after duty hours.*
- 5. Humiliation and discrimination because people fear to be infected if they meet any health workers .*
- 6. Blocked to and from work.*
- 7. Testing of Health Care Workers*



Source: PNA report on COVID-19
Ms. Marybeth Marcial, Chief Nurse CLMMRH

Measures done in the protection of the Medical Health Workers

Source: DOH



Bayanihan to Heal as One Act - Brochure



Bayanihan to Heal as One Act [RA11469]
Bayanihan to Heal as One Act - Poster



Bayanihan to Heal as One Act [RA11469]
Bayanihan to Heal as One Act - Flyer



Anti-Discrimination of Health Workers
Kakampi natin ang mga health care workers laban sa COVID-19.



Anti-Discrimination of Health Workers
May Emosyon din ang Health Care Workers



Anti-Discrimination of Health Workers
Nagbibigay Alaga ang Health Care Workers



Anti-Discrimination of Health Workers
Nagdi-disinfect and Health Care Workers



Anti-Discrimination of Health Workers
Nagsusuot ng PPE ang Health Care Workers



Anti-Discrimination of Health Workers
Patuloy na Nagtatrabaho ang Health Care Workers



Anti-Discrimination of Health Workers
Patuloy na Nagtatrabaho ang Health Care Workers



Anti-Discrimination of Health Workers
Araw-araw Nakikibaka ang Health Care Workers



Anti-Discrimination of Health Workers
Kakampi Natin ang Health Care Workers

Source: PNA report on COVID-19
Ms. Marybeth Marcial, Chief Nurse CLMMRH

Goal: Enhance Quality, Consistency, and Affordability of Care Provision

Source: DOH



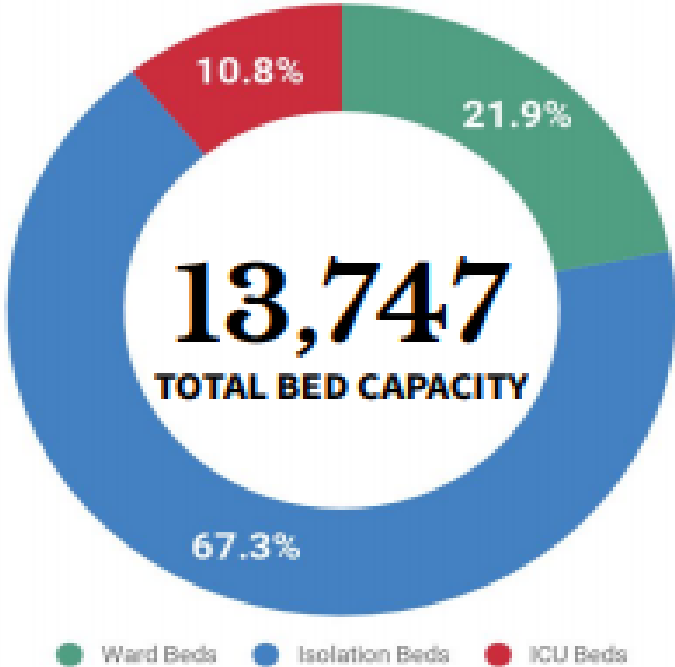
Goal: Enhance Quality, Consistency, and Affordability of Care Provision

Source: DOH

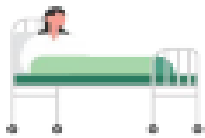
HOSPITAL BEDS AND MECHANICAL VENTILATORS DEDICATED TO COVID-19 CASES

Data taken from the DOH DataCollect App. Specific for COVID-19 cases.

As of June 3, 2020



Data as of 11:59 PM, June 3, 2020. The most recent submission of the facility was included in the analysis. The overall submission rate is 99.5% for hospitals and 99.5% for infirmaries.



1,048
Ward beds
occupied

1,965
available

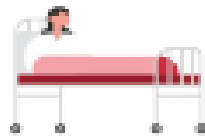


Ward beds for confirmed COVID-19 cases



3,198
Isolation beds
occupied

6,056
available



476
ICU beds
occupied

1,004
available



356
Mech vents
in use

1,601
available

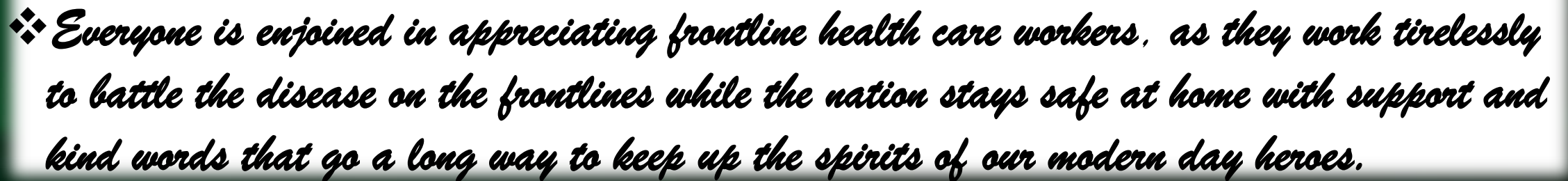


DOH Goal: Increase Resilience, Stop Transmission, Reduce Contact

Into *The New Normal* with Minimum Health Standards

- ❖ *follow simple precautions that would reduce exposure to COVID-19. Taking care of ourselves is also taking care of our families and communities.*
- ❖ *observe hygiene, proper coughing manners, wearing face masks and other PPEs, physical distancing, and checking for symptoms before entering the school, among others. If possible, studying from home is encouraged.*
- ❖ *maintain a healthy lifestyle to bolster immunity against diseases by preparing/ordering healthy meals, exercising regularly, and avoiding vices like smoking.*

Into *The New Normal* with Minimum Health Standards



Into *The New Normal* with Minimum Health Standards - DOH

Thank you

DOH

USLS

SCU

DOH 6

CLMMRH

TLJPH

PNA

Center for Linkages and International Affairs

Dr. Annabelle C. Balor

Dr. Renilyn Reyes

Dr. Marcella Elwina Simandjuntak

Ms. Marybeth Marcial

Dr. Barry John O. Belen

Ms. Cheryl N. Pacheco

Mr. Geoffrey Bob C. Bergante

TLJPH nurses

Webinar Participants